

framtid

Taxi System AB

Spring Seminar 2026



**Standardized Utilization
of Transport Information**

Agenda

09:30–10:00	Coffee & Mingle
10:00–10:15	Introduction
10:15–10:45	Annual General Meeting – Årsmöte
10:45–11:30	<i>What's cooking?</i> Reports from Members
11:30–12:15	Lunch
12:15–13:45	<i>What's new?</i> Report from Technical Committee
13:45–14:15	Afternoon »Fika« & mingle
14:15–15:00	<i>What's ahead?</i> Suggestions & Discussion

Introduction

- Welcome!
- Presentation of all participants
 - Name
 - Role
 - Organization
 - What's your organizations relation to SUTI today?

Participants

Stefan Olofsson	<u>stefan.olofsson@drtsolutions.eu</u>	DRT Solutions
Martin Andersson	<u>martin.andersson@drtsolutions.eu</u>	DRT
Bjarke Viksoe	<u>bvi@frogne.dk</u>	Frogne
Stefan Thyni	<u>stefan.thyni@halda.se</u>	Halda
Jens Bergström	<u>jens.bergstrom@halda.se</u>	Halda
Sebastian Löfdal	<u>sebastian.lofdal@holmedal.se</u>	Holmedal
Benny Larsen	<u>bla@flexdanmark.dk</u>	Flex Danmark
Kristina Hedeman	<u>kristina.hedeman@pasientreiser.no</u>	Pasientreiser
Øivind Fossan	<u>oivind.fossan@bekk.no</u>	Pasientreiser
Harald Syse	<u>uxsysh@ous-hf.no</u>	Pasientreiser
Mikkel Holst	<u>mikkel@bnr.dk</u>	Cencom AS / BNR
Pontus Blume	<u>pontus.blume@taxistockholm.se</u>	Taxi Stockholm

Participants

Ole Bisgaard	<u>obi@frogne.dk</u>	Frogne
Benny Jönsson	<u>benny.jonsson@holmedal.se</u>	Holmedal
Liam Salomonsson	<u>liam.salomonsson@cabonline.com</u>	Flygtaxi
Martin Linderå Nordström	<u>martin@linderagroup.com</u>	Linderå Group/ Svensk kollektivtrafik
Tor Egil Skytterholm	<u>tor-egil.skytterholm@ruter.no</u>	Ruter
Jonas Johansson	<u>jonas.johansson@svenskkollektivtrafik.se</u>	Svensk Kollektivtrafik
Olav Kveim	<u>okv@itf-as.no</u>	ITF
Ole Petter Bogen	<u>opb@tds.as</u>	TDS
Per Åke Persson	<u>pp@flygtaxi.se</u>	Flygtaxi
Christian Erikstrup	<u>christian.erikstrup@voyagerr.com</u>	Voyagerr
Kristoffer Ström	<u>kristoffer.strom@jlt.se</u>	JLT
Peter Ljunggren	<u>peter.ljunggren@cabonline.com</u>	Cabonline

Annual General Meeting – Årsmöte

Agenda

Annual Report

Nomination Committee's proposal

Dagordning

Årsredovisning

Valberedningens förslag

```
<SUTI>  
  §1  
  §2  
  §3  
  ...  
  
</SUTI>
```

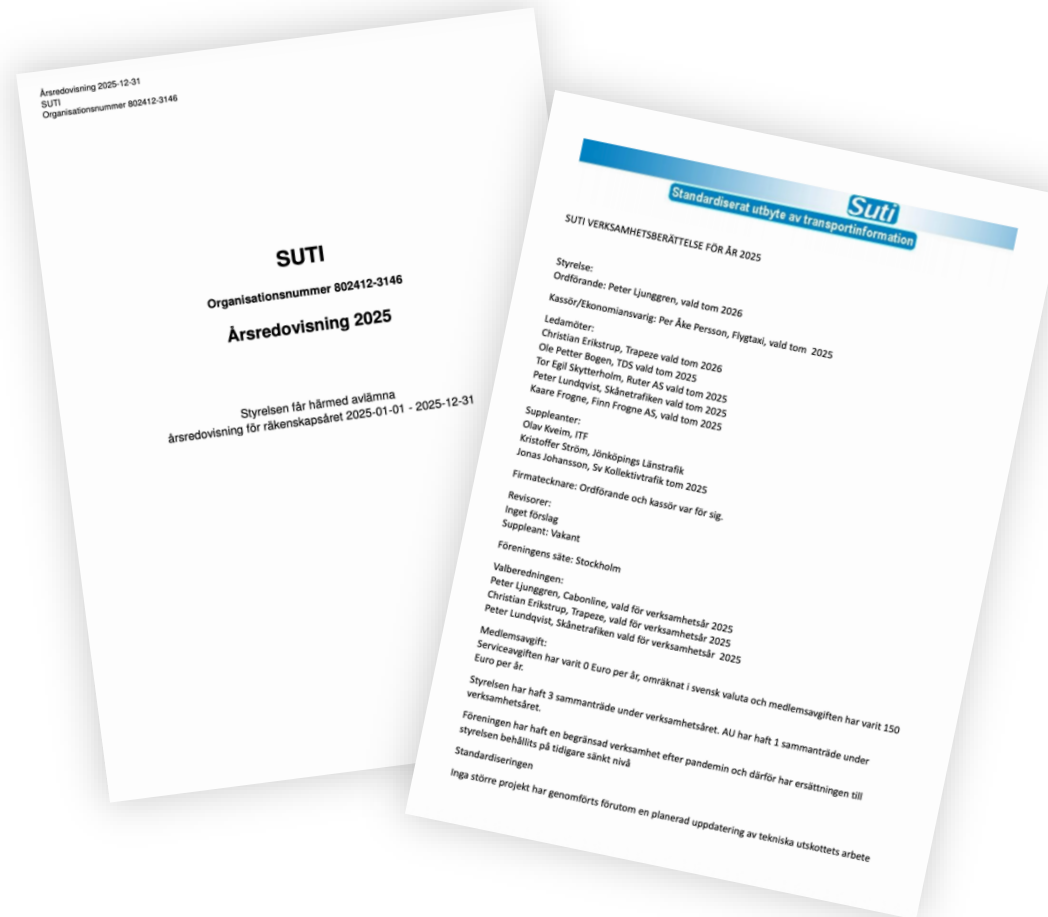
Annual General Meeting – Årsmöte

1. Opening of the meeting
2. Election of the Chair of the Meeting
3. Election of the Secretary of the Meeting
4. Adoption of the agenda and confirmation that the meeting has been duly convened
5. Election of person(s) to approve the minutes
6. Election of vote counters
7. Presentation of the Board of Directors' report and the auditors' report for the previous year
8. Adoption of the annual report and the activity report
9. Resolution on the allocation of the result
10. Resolution on discharge from liability for the Board of Directors
11. Establishing the number of ordinary board members and deputy members
12. Election of ordinary board members for 2026 and election of the Chair
13. Election of deputy board members for 2026
14. Resolution on authorized signatories
15. Election of auditors for 2026
16. Election of deputy auditors for 2026
17. Membership fee, budget, and principles for board remuneration
18. Mandate for the Board to constitute itself and adopt an operational plan for 2026
19. Election of the Nomination Committee for 2026
20. Any other business
21. Closing of the meeting

Annual General Meeting – Årsmöte

1. Mötets öppnande
2. Val av mötesordförande
3. Val av mötessekreterare
4. Förslag på dagordning och om stämman är behörigen kallad
5. Val av protokoll justerare
6. Val av rösträknare
7. Styrelsens och revisorernas berättelse för föregående år
8. Fastställande av årsredovisning och verksamhetsberättelse
9. Disponering av resultat
10. Ansvarsfrihet för styrelsen
11. Fastställa antalet ordinarie ledamöter och suppleanter
12. Val av ordinarie ledamöter för år 2026 samt val av Ordförande
13. Val av suppleanter för år 2026
14. Beslut om firmateckning
15. Val av revisorer för år 2026
16. Val av revisorssuppleanter för år 2026
17. Medlemsavgift, budget och arvodesprinciper för styrelsen
18. Ge styrelsen i uppdrag att konstituera sig och lägga verksamhetsplan för år 2026
19. Val av valberedning för år 2026
20. Övriga frågor
21. Avslutning

Annual Report – Årsredovisning



Nomination committee's proposal

Valberedningens förslag

Namn	Roll	Företag	Period	Status	Ordinarie/Suppleant
Peter Ljunggren	Styrelseordförande	Cabonline	2 år	1 år kvar	Ordinarie
Christian Erikstrup	Ledamot	Voyagerr	2 år	1 år kvar	Ordinarie
Liam Salomonsson	Ledamot	Cabonline	1 år	Nyval	Ordinarie
Ole Petter Bogen	Ledamot	TDS	2 år	Omval	Ordinarie
Tor-Egil Skytterholm	Ledamot	Ruter	2 år	Omval	Ordinarie
Kaare Frogne	Ledaremot	FROGNE	2 år	Omval	Ordinarie
Peter Lundqvist	Ledamot	Skånetrafiken	2 år	Omval	Ordinarie
Jonas Johansson	Ledamot	Svensk Kollektivtrafik	1 år	Omval	Ordinarie
Olav Kveim	Suppleant	ITF	1 år	Omval	Suppleant
Kristoffer Ström	Suppleant	Jönköpings Länstrafik	1 år	Omval	Suppleant

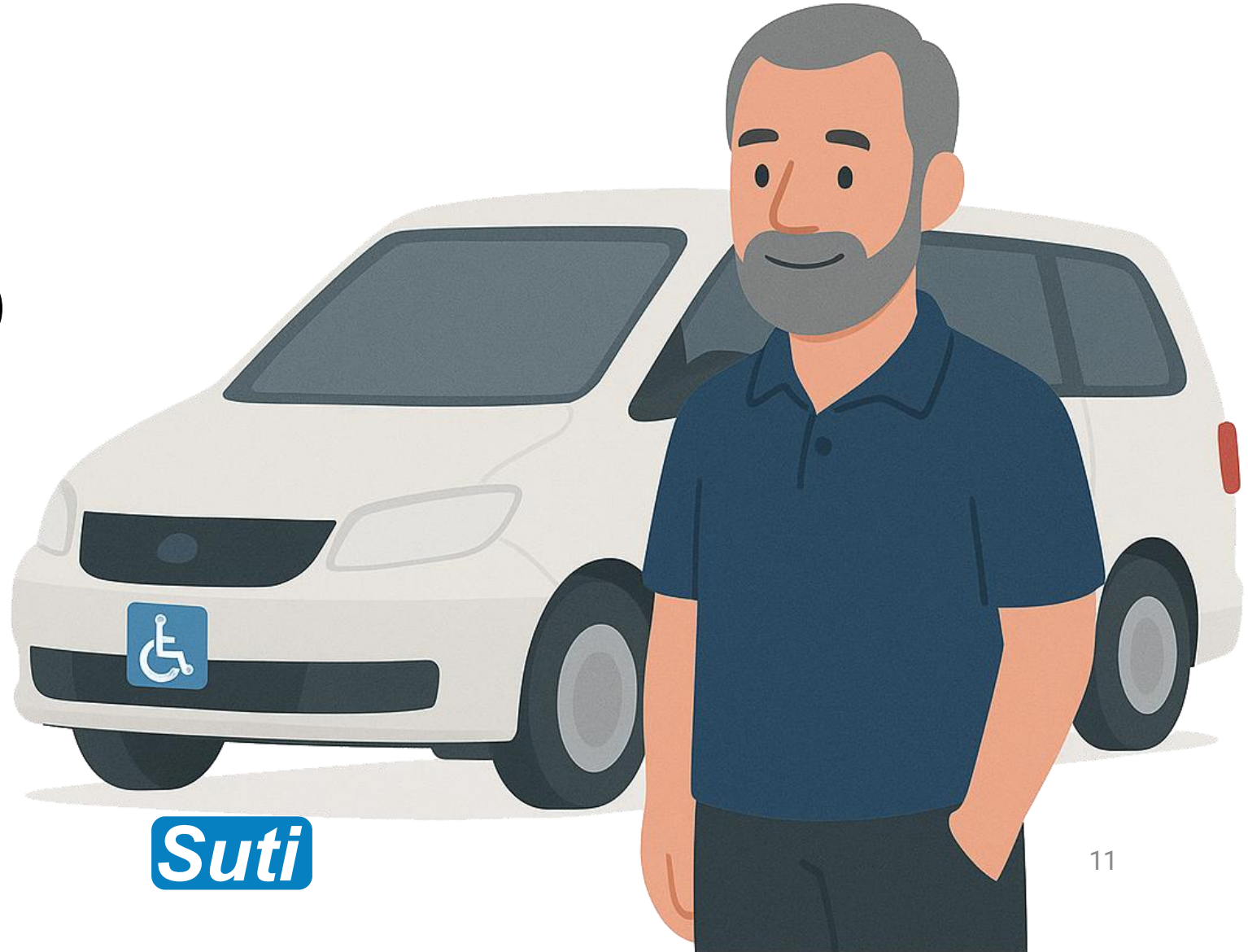
Valberedning

Peter Ljunggren	Valberedning	Cabonline	1 år	
Christian Erikstrup	Valberedning	Voyagerr	1 år	
Peter Lundqvist	Valberedning	Skånetrafiken	1 år	

Avgår	Roll	Företag	Period	Status	Ordinarie/Suppleant
Per-Åke Persson	Ledaremot	Flygtaxi	2 år	Avgår	Ordinarie

What's cooking?

- Ultimo (Christian)
- GeSys (Jonas)
- Pasientreiser (Kristina)



Ultimo

Christian Erikstrup
Voyagerr



GeSys

Gemensamma systemutvecklingsbehov för integrerad trafik

Jonas Johansson
Svensk Kollektivtrafik



Ny nasjonal løsning for planlegging og optimering av pasientreiser

Kristina Hedeman
Pasientreiser

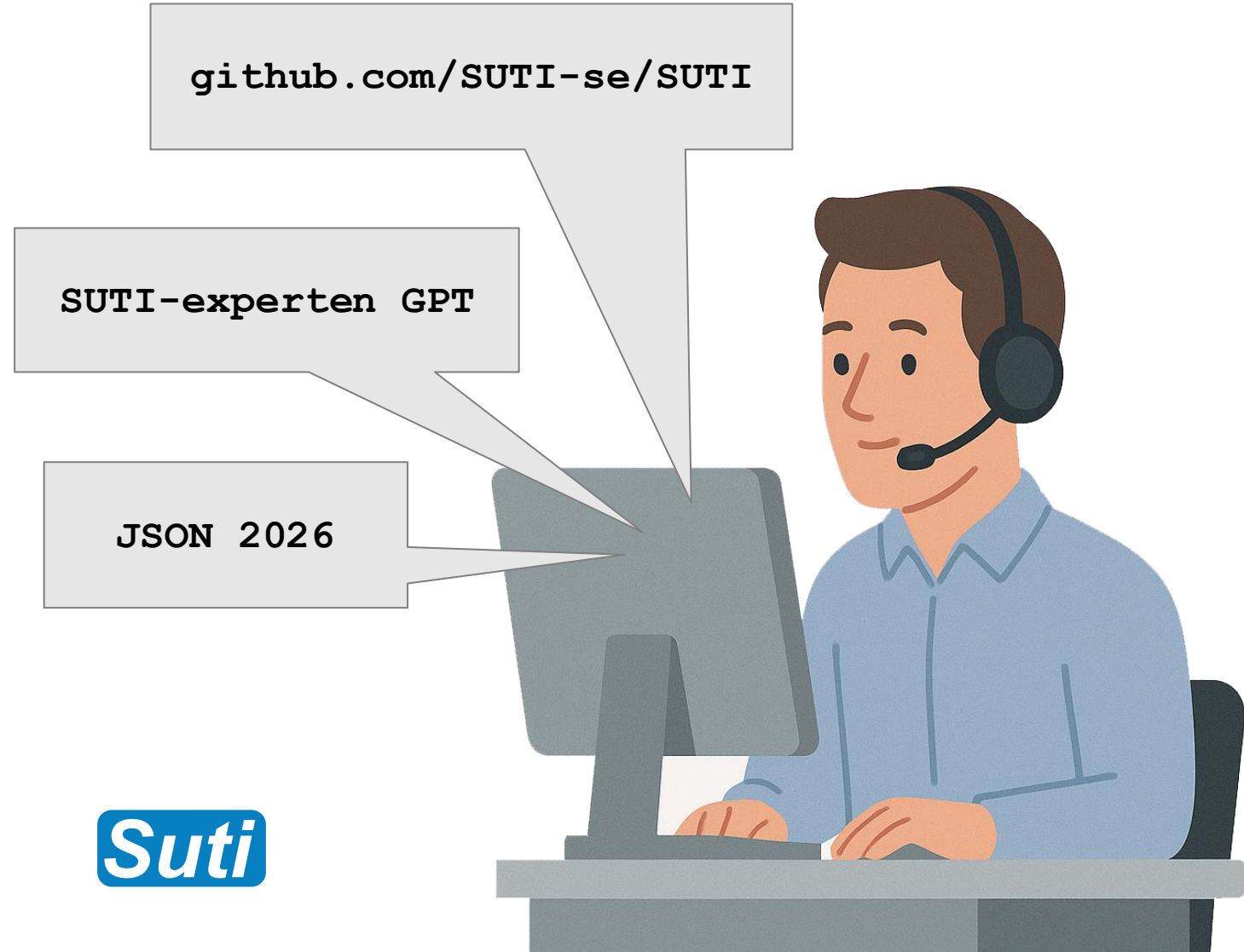


LUNCH until 12:15



What's new?

- SUTI on GitHub
- An introduction to SUTI
- How to use SUTI
- LinkMapping
- SUTI-experten AI-chatbot
- JSON 2026
& AI assisted development
- Research project



SUTI on GitHub

<https://github.com/SUTI-se/SUTI/>

- Advanced versioning
- Releasing new versions is simple
- Branches for new features
- Transparency



`github.com/SUTI-se/SUTI`



SUTI on GitHub

<https://github.com/SUTI-se/SUTI/>

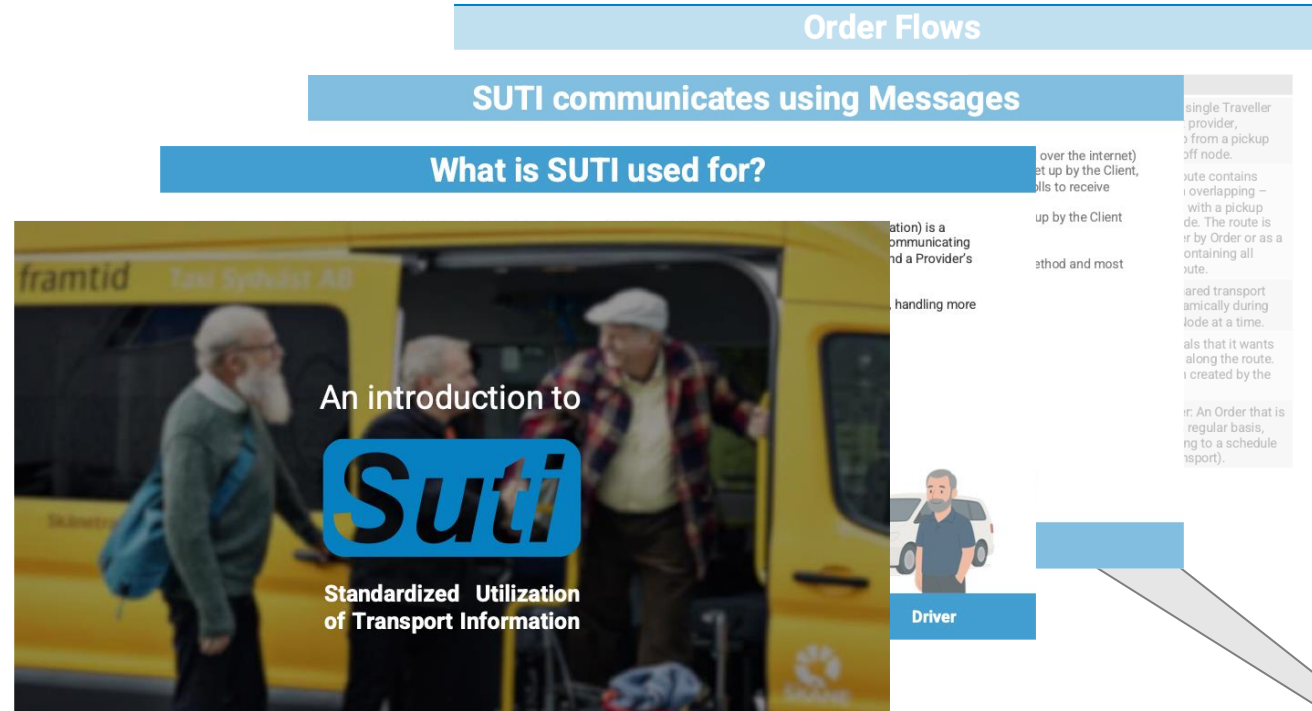
- Updated document structure
- Enumerations now as a single YAML-file
- XML Examples
- Validation of examples



`github.com/SUTI-se/SUTI`



An introduction to SUTI

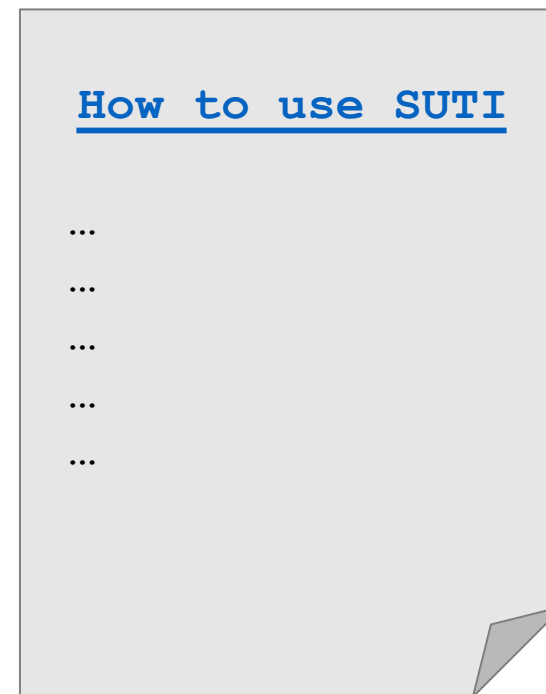


How to use SUTI

- The new "bible" of SUTI developed out of
- An Introduction to SUTI (chapters 1 and 3)
 - Use Cases (remaining chapters)

The only new content is the description of Linkmapping

.. and unification in use of vital terms & proof-reading



Link Mapping

Intended to replace the Excel 'Link mapping' used by some of us when setting up links. The goal is to simplify the process and minimize issues such as misspellings of the 'SRC' attribute, while also enabling automated link setup if desired.

- When setting up a link, a [7100 'Link Mapping Request'](#) can be sent by the Client, either within the link itself or as a separate file.
- In response to the 7100, the Provider can return its configuration to the Client using a [7101 'Link Mapping Response'](#).

```
<SUTI>
...
<msg msgType="7100"
      msgName="Link Mapping Request">
...
</SUTI>
```

```
<SUTI>
...
<msg msgType="7101"
      msgName="Link Mapping Response">
...
</SUTI>
```

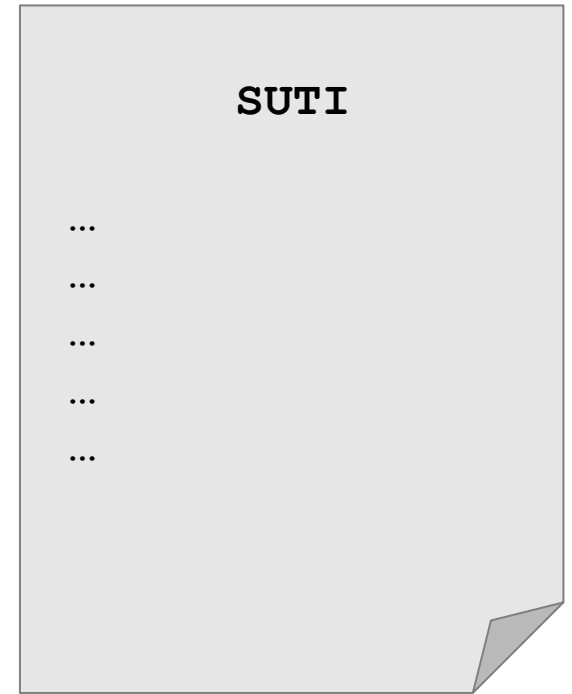


SUTI status

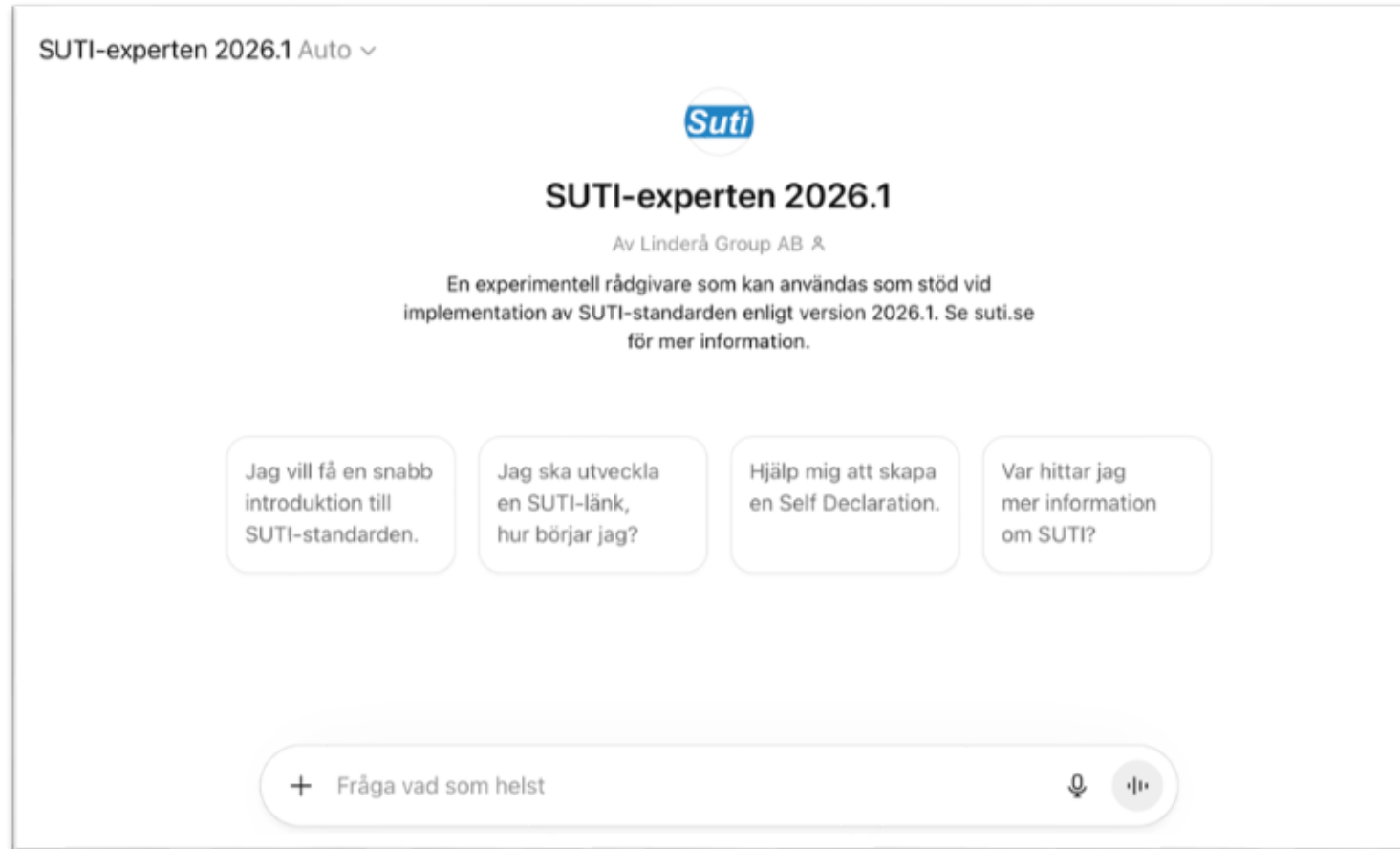
With present status of [SUTI 2026.1](#)
all items under consideration are now effected.

The standard thus consists of

- How to use SUTI
- SUTI messages
- SUTI XML schema
- SUTI Enumerations in YAML
- SUTI Json Schema för bulkLocations
(will be added in 2026.2)



SUTI-experten – our new AI chatbot



SUTI-experten GPT



SUTI-experten – our new AI chatbot



SUTI-experten GPT



Format evolution XML → JSON

- Background
 - XML
 - JSON 2021
- 2026 revision

```
{  
  "SUTIMessages": {  
    "msg": {  
      "msgType": "2000",  
      ...  
    }  
  }  
}
```

JSON 2026



XML

```
<?xml version="1.0" encoding="UTF-8"?>
<SUTI xmlns:xsi="http://www.w3.org/2001/XMLSchema-instance"
      xsi:noNamespaceSchemaLocation=".../SUTI_Message.xsd">
  <orgSender name="Klient AB">
    <idOrg src="SUTI:idLink" id="sys_klient_001" unique="true"/>
  </orgSender>
  <orgReceiver name="Taxi AB">
    <idOrg src="SUTI:idLink" id="sys_taxi_002" unique="true"/>
  </orgReceiver>
  <msg msgType="7000" msgName="Keep alive">
    <idMsg src="sys_klient_001:idMsg" id="2026031500001"
          unique="true"/>
  </msg>
</SUTI>
```

JSON 2026

```
{
  "$schema": ".../SUTI_Message.schema.json",
  "msg": {
    "msgType": "7000",
    "orgSender": { "name": "Klient AB",
                  "idOrg": { "src": "SUTI:idLink",
                             "id": "sys_klient_001" } },
    "orgReceiver": { "name": "Taxi AB",
                    "idOrg": { "src": "SUTI:idLink",
                               "id": "sys_taxi_002" } },
    "idMsg": { "src": "sys_klient_001:idMsg", "id": "2026031500001" }
  }
}
```

JSON 2021

```
{
  "SUTI_7000_keepAlive": {
    "msg": {
      "msgType": "7000",
      "orgSender": { "name": "Klient AB",
                    "idOrg": { "src": "SUTI:idLink",
                               "id": "sys_klient_001" } },
      "orgReceiver": { "name": "Taxi AB",
                      "idOrg": { "src": "SUTI:idLink",
                                   "id": "sys_taxi_002" } },
      "idMsg": { "src": "sys_klient_001:idMsg", "id": "2026031500001" }
    }
  }
}
```

Key differences

- XML
 - <SUTI> root wrapper, orgSender/orgReceiver outside <msg>
- JSON 2021
 - Message-type wrapper key ("SUTI_7000_keepAlive") around everything
- JSON 2026
 - Flat structure, \$schema reference, message type identified by msg.msgType only. One msg or sutiMessages for batch sending.

```
{  
  "SUTIMessages": {  
    "msg": {  
      "msgType": "2000",  
      ...  
    }  
  }  
}
```

JSON 2026



Naming Cleanup JSON 2021 → 2026

2021 (verbose)	2026 (cleaned up)	Rationale
"nameContent"	"name"	Context provides meaning
"economyContent"	"economy"	Ditto
"resourceContent"	"resource"	Ditto
"contactInfosContent"	"contactInfo"	Shorter
"attributesContent"	"attributes"	Shorter
"idVehicleArray"	"ids"	Generic
"idOrderArray"	"orderIds"	Clearer
"subOrderContent"	"subOrder"	Shorter
"timesNode"	"times"	Shorter
"nodeSeqno"	"nodeSeqNo"	camelCase fix

```
{
  "SUTIMessages": {
    "msg": {
      "msgType": "2000",
      ...
    }
  }
}
```

JSON 2026



Example – passenger content

XML

```
{ "nameContent": "Anna Svensson",  
  "economyContent": { "payments": [...] },  
  "contactInfosContent": [{  
    "contactType": "phone",  
    "contactInfo": "046-171000" }]  
}
```

JSON 2026

```
{ "name": "Anna Svensson",  
  "economy": { "payments": [...] },  
  "contactInfo": [{  
    "contactType": "phone",  
    "contactValue": "046-171000" }]  
}
```

```
{  
  "SUTIMessages": {  
    "msg": {  
      "msgType": "2000",  
      ...  
    }  
  }  
}
```

JSON 2026



New in JSON 2026: sutiMessages batch

```
{
  "$schema": ".../SUTI_Message.schema.json",
  "sutiMessages": [
    { "msg":
      { "msgType": "2000", ... },
      "order": { ... } },
    { "msg":
      { "msgType": "2000", ... },
      "order": { ... } },
    { "msg":
      { "msgType": "7000", ... } }
  ]
}
```

```
{
  "SUTIMessages": {
    "msg": {
      "msgType": "2000",
      ...
    }
  }
}
```

JSON 2026



AI assisted development

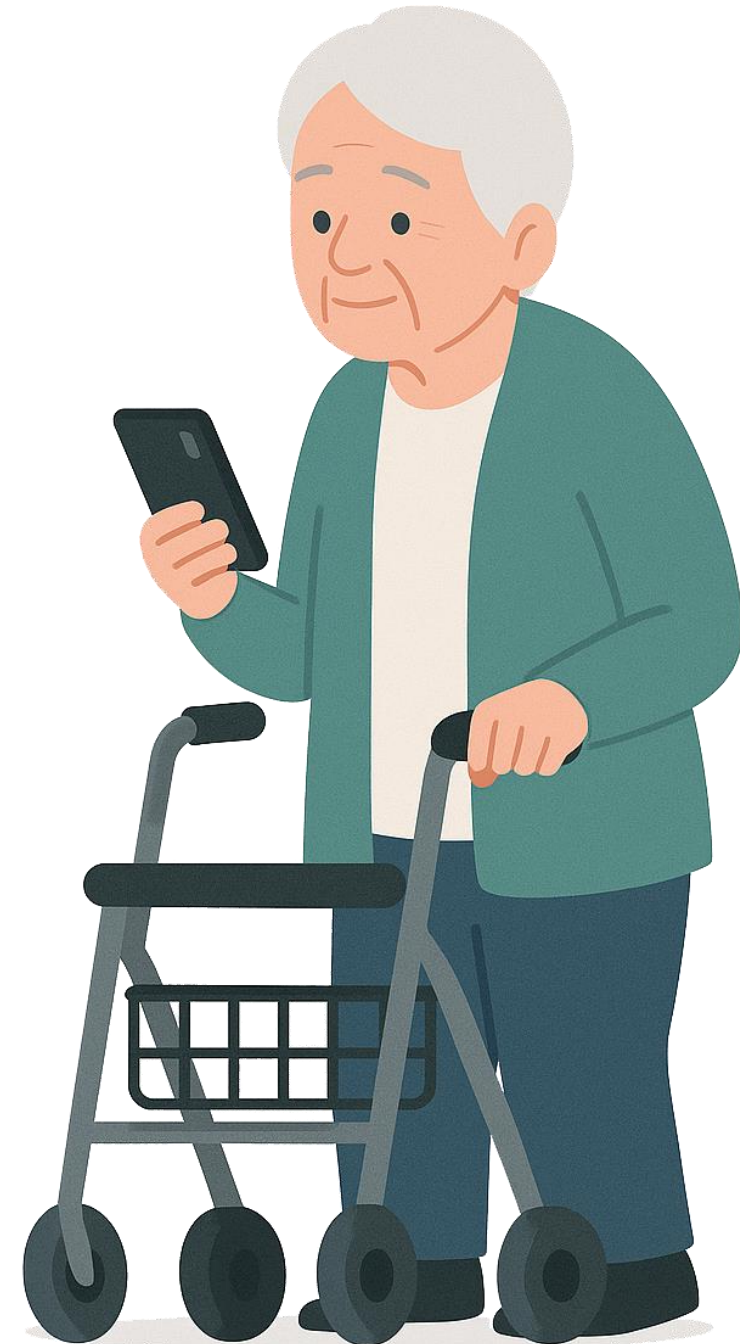
- AI Agents analyze based on access to the entire standard
- Swiftly make large changes
- Ask about direction and strategic choices
- Find inconsistencies & incompleteness
- Generate examples
- Validate XML & JSON

```
{  
  "SUTIMessages": {  
    "msg": {  
      "msgType": "2000",  
      ...  
    }  
  }  
}
```

JSON 2026



FIKA until 14:00



What's ahead?

- Research
- AI training
- Your ideas & thoughts



Research project

- Why?
 - Better support for DRT+PT journeys
 - Wider adoption outside the Nordics
- What?
 - Harmonize SUTI with European Public transport standards: Transmodel, SIRI, IFOPT
- How?
 - Two possible paths:
 - As partner with RISE in an upcoming Horizon EU-call
 - Included in remaining work within Ultimo

SUTI Applied Research



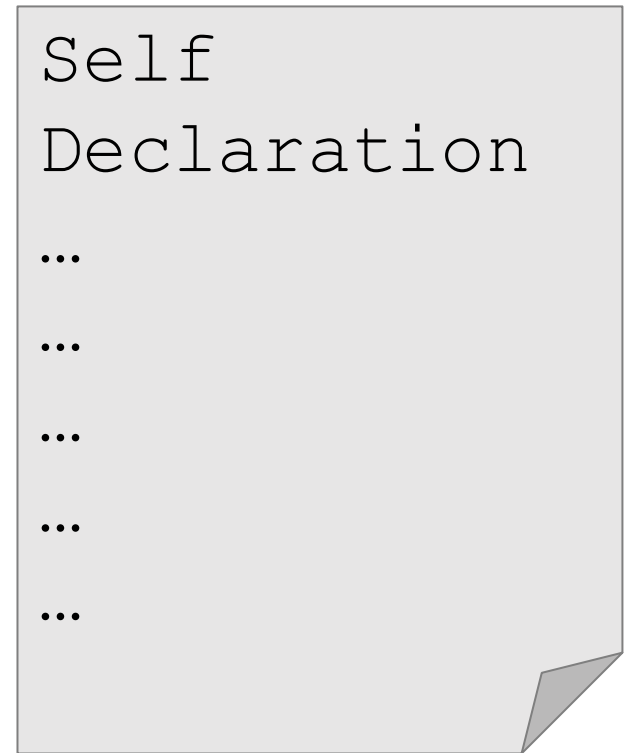
Self declarations

Friendly reminder:

Send your Self declarations to tc@suti.se

The value is that we can:

- keep track of what parts of the standard are in use
- use the self declarations for analysis of possible improvements in SUTI
- make them accessible for members
- Create AI-supported generation of new self declarations



What's ahead?

Members!

What do you want?

What do you need?

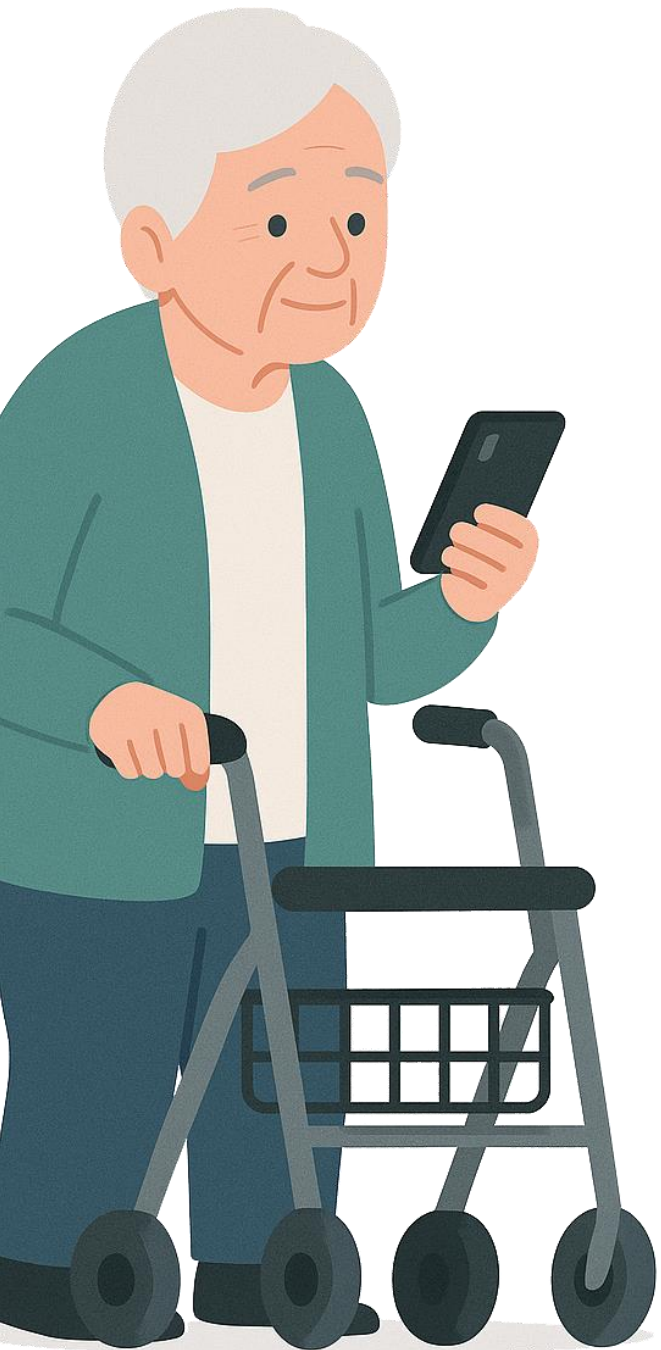
What do you see?



What's ahead? Potential themes

- SUTI's long term development and position
 - Research projects and internationalization
 - What changes in the DRT field can SUTI cater to?
 - How do we ensure SUTI stays relevant over time?
 - How do we balance maintenance and development?
- JSON implementation in the near term
- How can we improve service when Travellers are willing to share their current position?
- Better support for environmental reporting
- How to better support new implementations
 - AI-assistance
 - Documentation
 - Self declarations vs. Profiles
 - Technical modeling of Flows
 - Validation
 - Community developed reference implementations?





THANK YOU!

Suti

